



COMMUNITY OVERVIEW

16221 Simonds RD NE, Kenmore WA 98028



425.818.7770 | info@msrcommunities.com



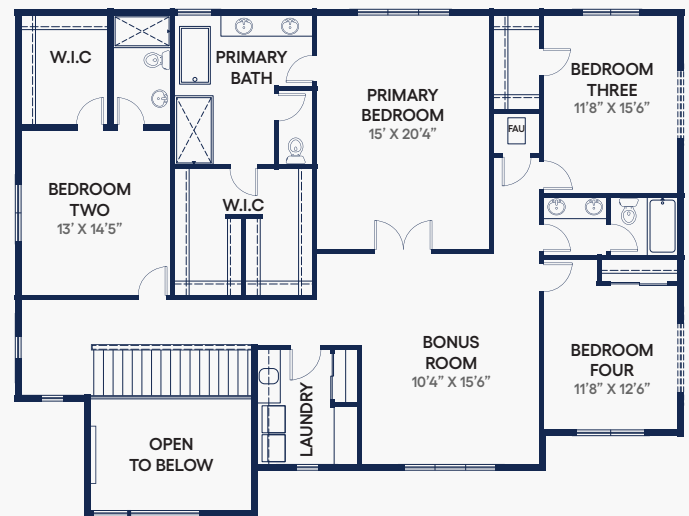
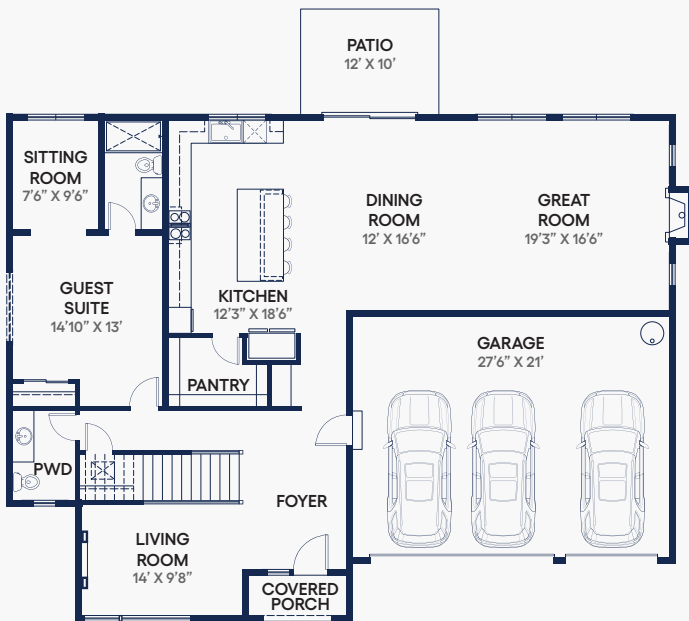


PLAN 3813

Lot 2, 3

MAIN LEVEL

UPPER LEVEL



- 5 Bedrooms, 4.5 Baths
- 3,781 SF
- Bedroom with Sitting Room and Bath on Main Floor
- Walk-In Pantry
- Fireplace with Gas Insert

- Primary Suite with French Doors and Walk-In Closet
- Bonus Room Upstairs
- Covered Patio
- 3-Car, Side by Side Garage
- South-East Facing

425.818.7770 | info@msrcommunities.com

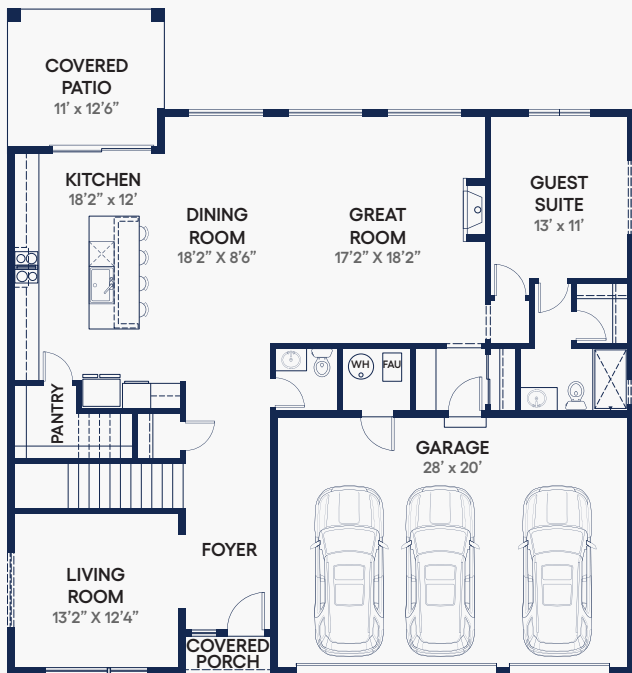




PLAN 3781

Lot 4

MAIN LEVEL



UPPER LEVEL



- 5 Bedrooms, 4.5 Baths
- 3,781 SF
- Bedroom with Ensuite Bath on Main Floor
- Walk-In Pantry
- Fireplace with Gas Insert

- Primary Suite with French Doors and Walk-In Closet
- Bonus Room Upstairs
- Patio
- 3-Car, Side by Side Garage
- South-East Facing

425.818.7770 | info@msrcommunities.com

