

# FLOORPLANS

## AZOLLA



5211 SF



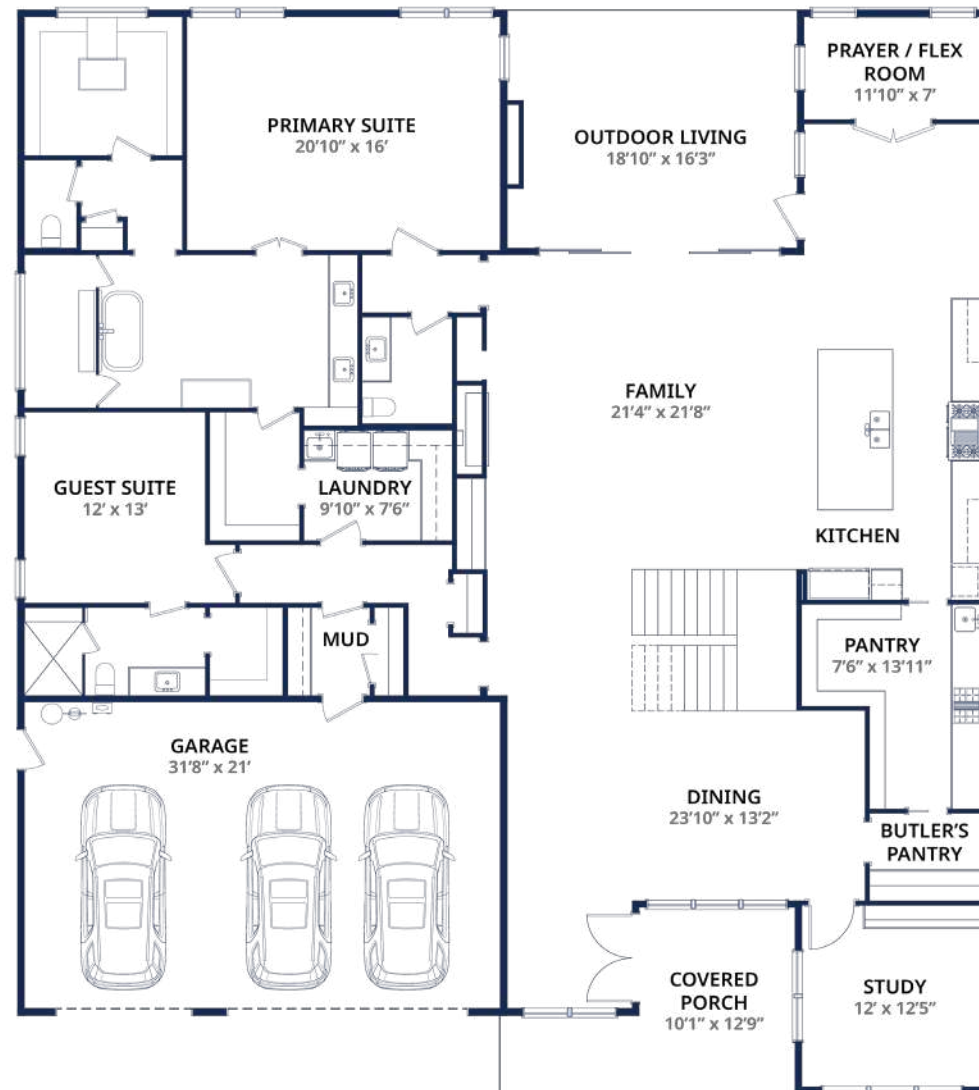
5 BEDROOMS



5.5 BATHS

- 2-Story Grand Foyer
- 2-Story Family Room
- Primary Suite with Closet
- Guest/In-Laws Suite
- Laundry Room on Main Floor
- Powder Room on Main Floor
- Mud Room
- Gourmet Chef's Kitchen
- Prep Kitchen with Walk-In Pantry
- Butler's Pantry
- Study
- Prayer / Flex Room
- Covered Front Porch
- Covered Outdoor Living Area
- 3-Car Garage

## MAIN LEVEL



# FLOORPLANS

## AZOLLA



5211 SF



5 BEDROOMS



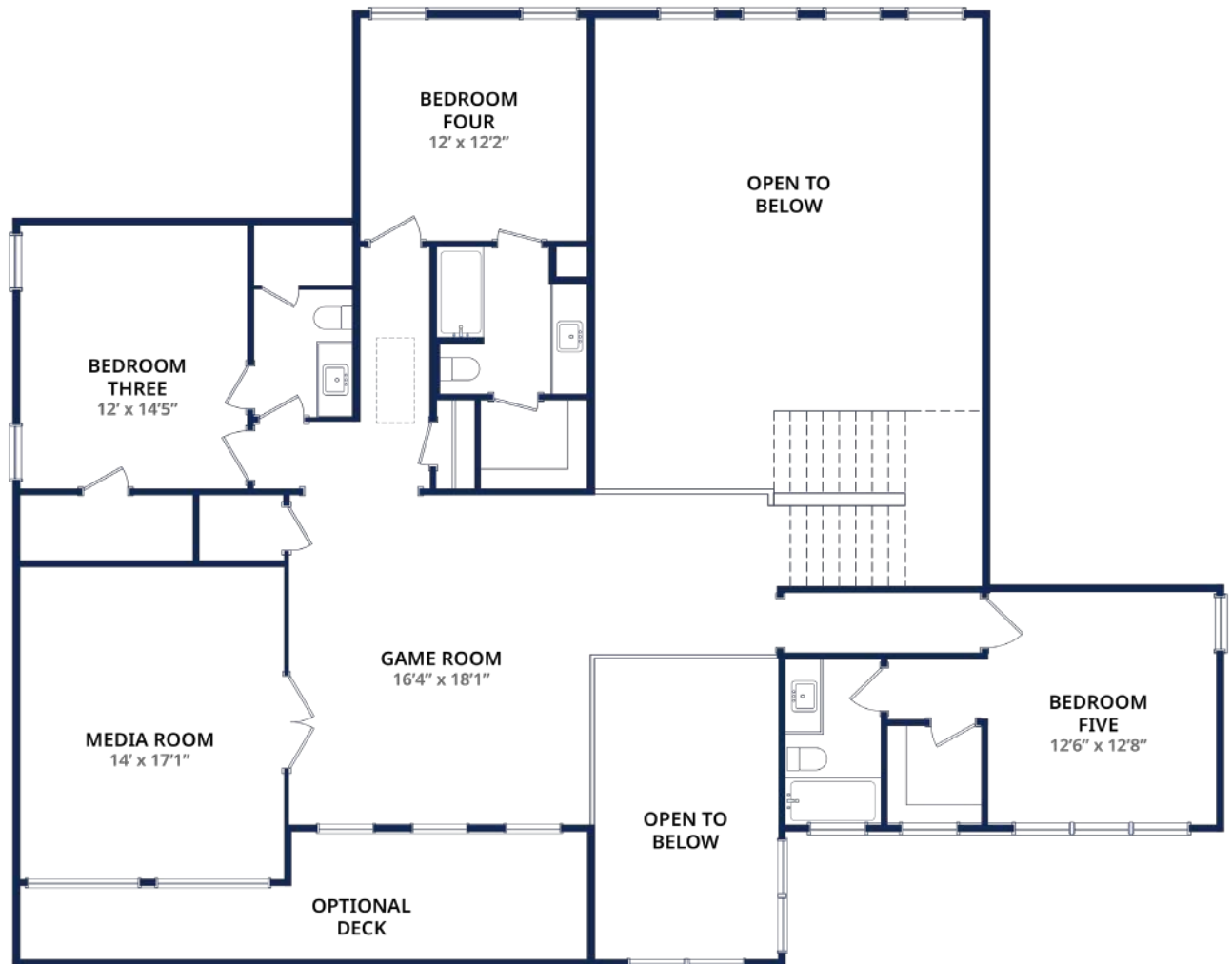
5.5 BATHS

- Game Room
- Media Room
- 3 Bedrooms
- Optional Deck
- Dual-Furnace Utility Room

### OPTIONAL

- Floating Staircase with Glass Railing
- Wolf Kitchen Appliance Package
- Wet Bar in Game Room
- Main Floor In-Law Suite
- Floating Vanity Shelves & Centered Rain Shower in Primary Bath
- Walk-in Showers Upstairs
- Custom Cabinets in Primary Bedroom Closets

## UPPER LEVEL



## AZOLLA ELEVATION A



\*All images shown are for illustration purposes only and may not be an exact representation of the finished product.



## AZOLLA ELEVATION A



\*All images shown are for illustration purposes only and may not be an exact representation of the finished product.



## AZOLLA ELEVATION B



\*All images shown are for illustration purposes only and may not be an exact representation of the finished product.